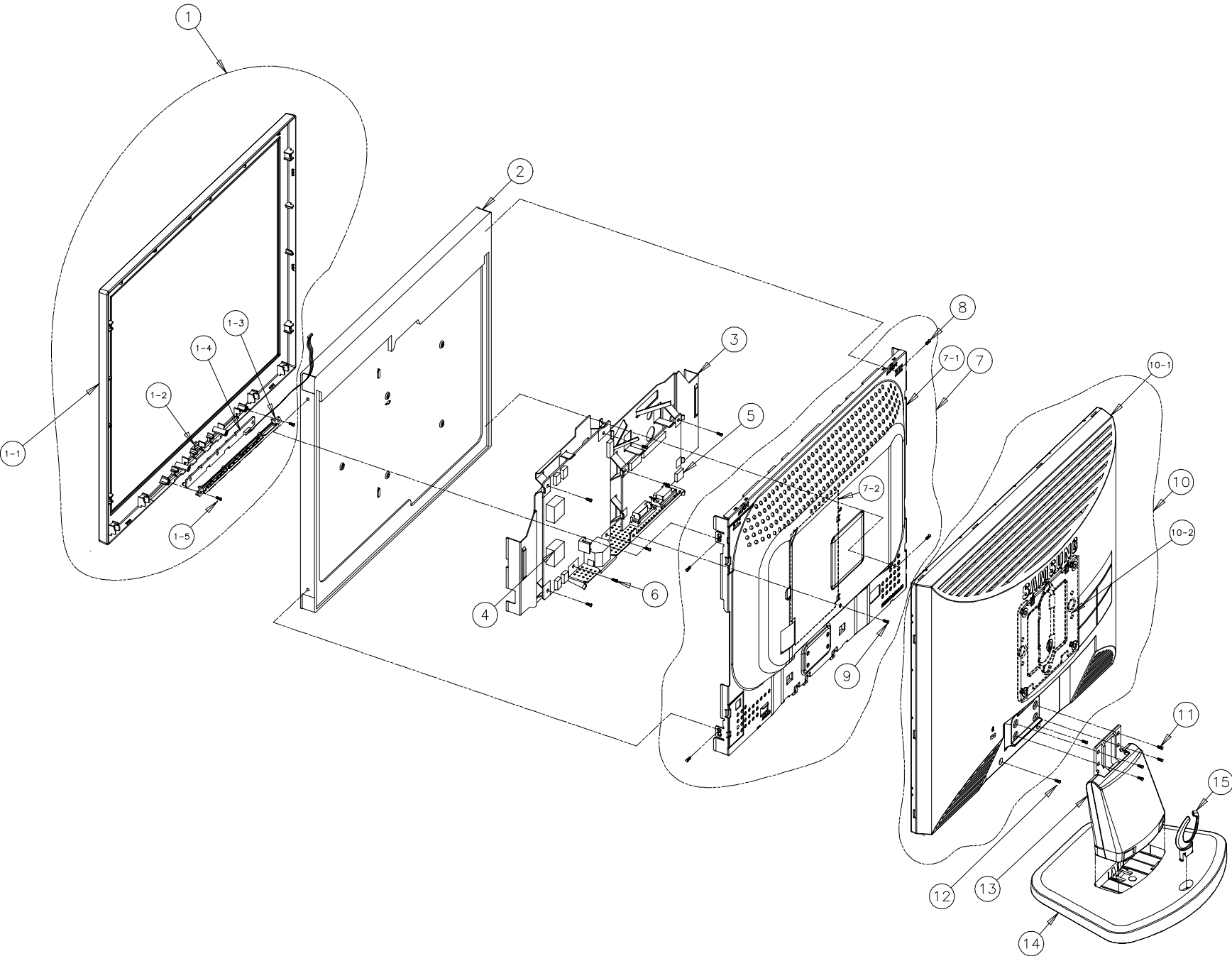


6 Exploded View and Parts List

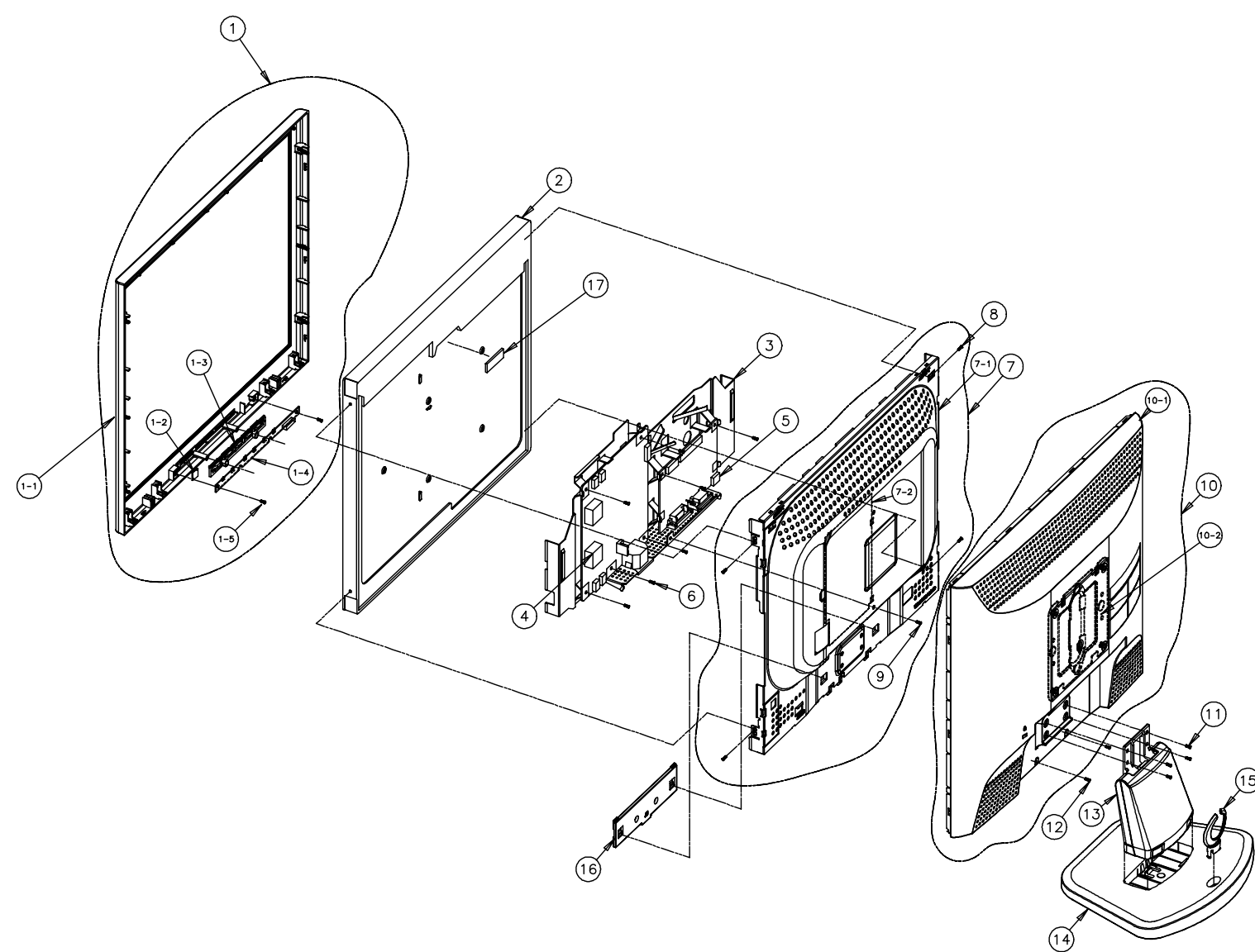
※ You can search for updated part codes through ITSELF web site.  
URL : <http://itself.sec.samsung.co.kr>

6-1 GS17VS



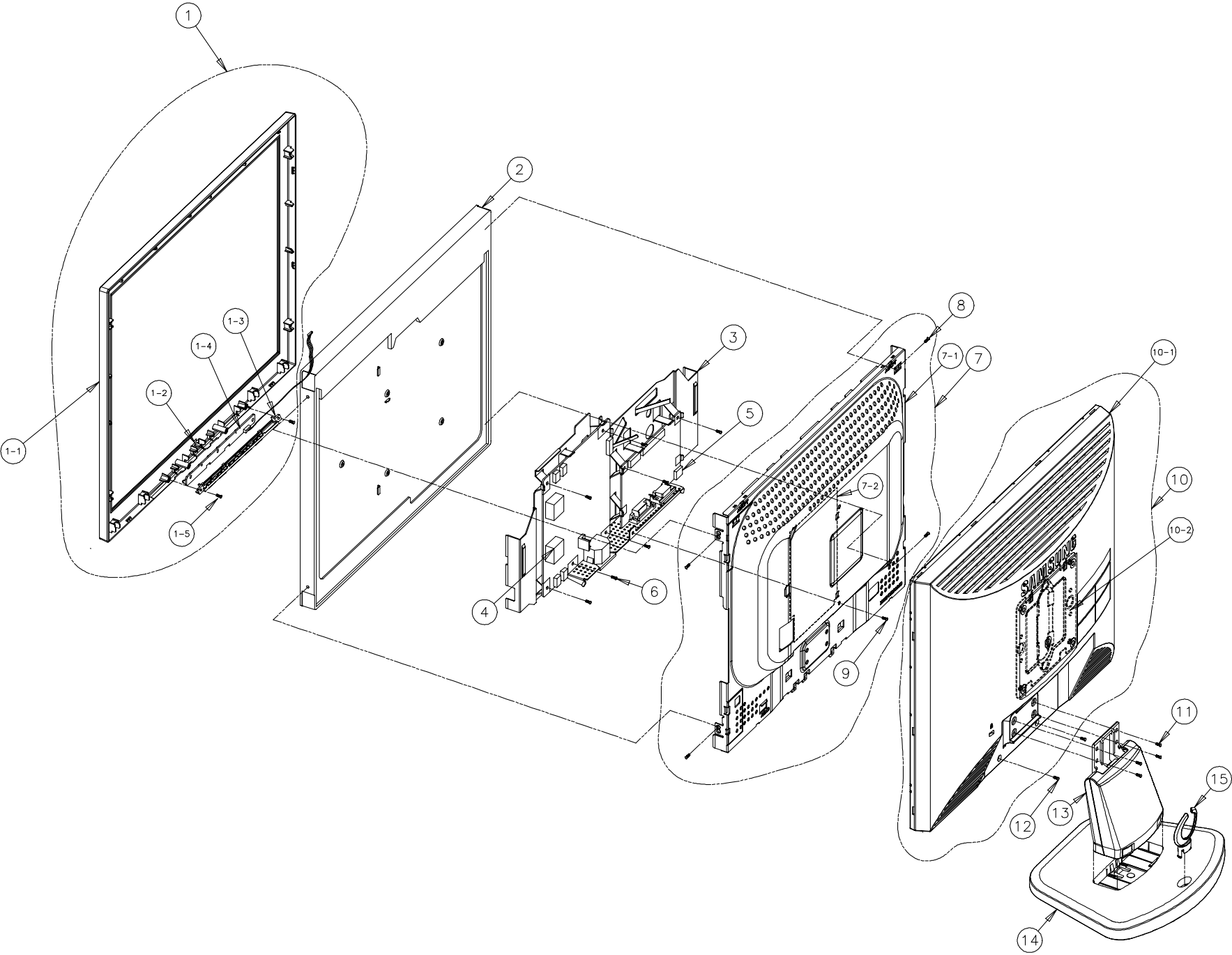
No.	DESCRIPTION	CODE No.	SPECIFICATION	Q'ty	REMARK
1	ASSY, COVER-FRONT	BN96-01069A	ABS HB, GR70, SILVER	1	SA
1-1	COVER-FRONT	BN63-00565K	ABS HB GR70 SILVER	1	SNA
1-2	LENS-LED	BN67-00120A	ACRYL, CLEAR	1	SNA
1-3	KNOB-FUNCTION	BN64-00139B	ABS+PC, GR70 SILVER	1	SNA
1-4	ASS'Y FUNCTION-PCB	BN96-01112A	-	1	SNA
1-5	SCREW TAPTITE	6003-000276	BH, +, B, M3, L10, ZPC(YEL), SWCH10	2	SA
2	PANEL	BN07-00085A	L17M70EP-L01, 017LS, 1280*1024, 17, 16, 198, 56, 0.2844, 2M, 0°35, S, 0, 7M, -	1	SA
3	BRKT-PCB	BN61-01102A	SECC T1.0, ANALOGTYPE	1	SNA
4	IP-BOARD	BN44-00106A	-	1	SA
5	MAIN-BOARD	BN94-00516S	-	1	SA
6	SCREW TAPTITE	6003-000117	BH, +, B, M3, L6, ZPC(YEL), SWRC	7	SA
7	ASSY, SHIELD-COVER	BN96-01059B	SECC T1.0	1	SNA
7-1	SHIELD-COVER	BN63-01211A	SECC T1.0	1	SNA
7-2	COVER-INSULATOR	BN63-01313A	PC SHEET V2, T0.35, 106*144	1	SNA
8	SCREW-MACHINE	6001-000559	FH, +, M3, L6, ZPC(YEL)	4	SA
9	SCREW-TAPTITE	6003-000117	BH, +, B, M3, L6, ZPC(YEL), SWRC	1	SA
10	ASSY, COVER-REAR	BN96-01070A	ABS HB, BK07	1	SA
10-1	COVER-REAR	BN63-01216A	ABS HB, BK07	1	SNA
10-2	BRKT-VESA	BN61-00377A	GY17LS, SECC, T1.0, 100*100	1	SNA
11	SCREW-TAPTITE	6003-000337	BH, +, S, M4, L10, ZPC(BLK), SWRCH18	4	SA
12	SCREW-TAPTITE	6003-001086	BH, +, B, M3, L12, ZPC(BLK), SWRCH18	2	SA
13	ASSY, STAND	BN96-01063A	ABS HB, BK07	1	SA
14	STAND-BASE	BN61-00824A	ABS HB, BK07	1	SNA
15	STAND-HOLDER	BN61-00821A	ABS HB, BK07	1	SNA

6-2 GS17VT



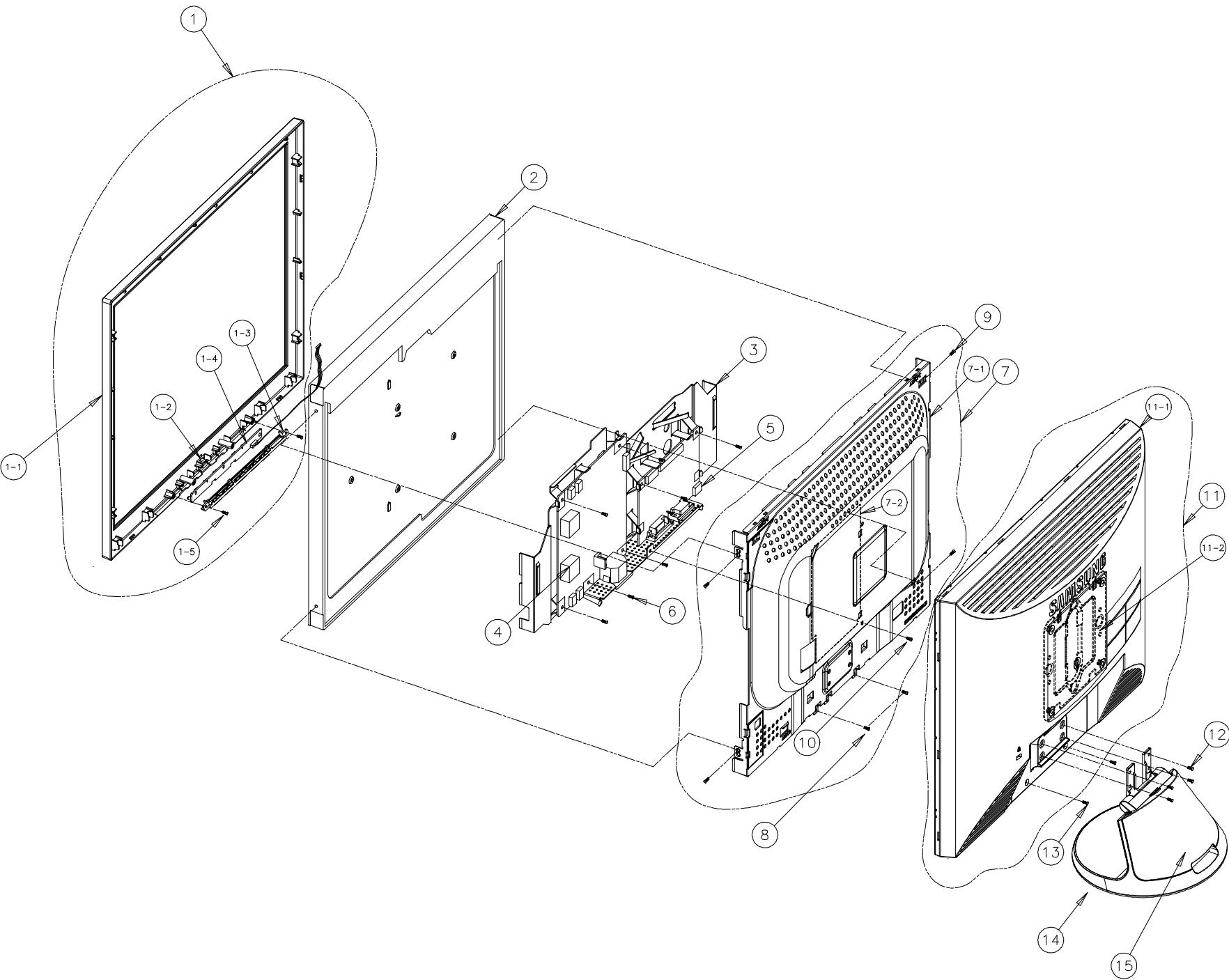
No.	DESCRIPTION	COD No.	SPECIFICATION	Q'ty	REMARK
1	ASSY, COVER-FRONT	BN96-01086A	ABS HB, GR70, SILVER	1	SA
1-1	COVER-FRONT	BN63-00586G	ABS HB GR70 SILVER	1	SNA
1-2	LENS-LED	BN67-00036A	ACRYL, CLEAR	1	SNA
1-3	KNOB-FUNCTION	BN64-00139B	ABS+PC, GR70 SILVER	1	SA
1-4	FUNCTION-PCB	BN96-01113A	-	1	SA
1-5	SCREW TAPTITE	6003-000276	BH, +, B, M3, L10, ZPC(YEL)	2	SNA
2	AU-PANEL	BN07-00076A, BN07-00076B	-	1	SNA
3	BRKT-PCB	BN61-01102A	SECC T1.0, ANALOG TYPE	1	SNA
4	IP-BOARD	BN44-00082C	-	1	SA
5	MAIN-BOARD	BN94-00516S	-	1	SA
6	SCREW TAPTITE	6003-000117	BH, +, B, M3, L6, ZPC(YEL), SWRC	7	SNA
7	ASSY, SHIELD-COVER	BN96-01059B	SECC T1.0	1	SA
7-1	SHIELD-COVER	BN63-01211A	SECC T1.0	1	SNA
7-2	COVER-INSULATOR	BN63-01313A	PC SHEET V2, T0.35, 106*144	1	SNA
8	SCREW-MACHINE	6001-000559	FH, +, M3, L6, ZPC(YEL)	4	SNA
9	SCREW-TAPTITE	6003-000117	BH, +, B, M3, L6, ZPC(YEL), SWRC	1	SNA
10	ASSY, COVER-REAR	BN96-01071A	ABS HB, BK07	1	SNA
10-1	COVER-REAR	BN63-01210A	ABS HB, BK07	1	SA
10-2	BRKT-VESA	BN61-00377A	GY17LS, SECC, T1.0, 100*100	1	SNA
11	SCREW-TAPTITE	6003-000337	BH, +, S, M4, L10, ZPC(BLK), SWRCH18	4	SNA
12	SCREW-TAPTITE	6003-001086	BH, +, B, M3, L12, ZPC(BLK), SWRCH18	2	SNA
13	ASSY, STAND	BN96-01063A	ABS HB, BK07	1	SA
14	STAND-BASE	BN61-00824A	ABS HB, BK07	1	SNA
15	STAND-HOLDER	BN61-00821A	ABS HB, BK07	1	SNA
16	SUPPORT-PANEL/AU	BN61-01219A	ABS HB, BK07	1	SNA
17	RUBBER-CUSHION	BN73-00030A	40X15X1.5T, BLACK, SL-020508 1.5T	1	SNA

6-3 GS19VS



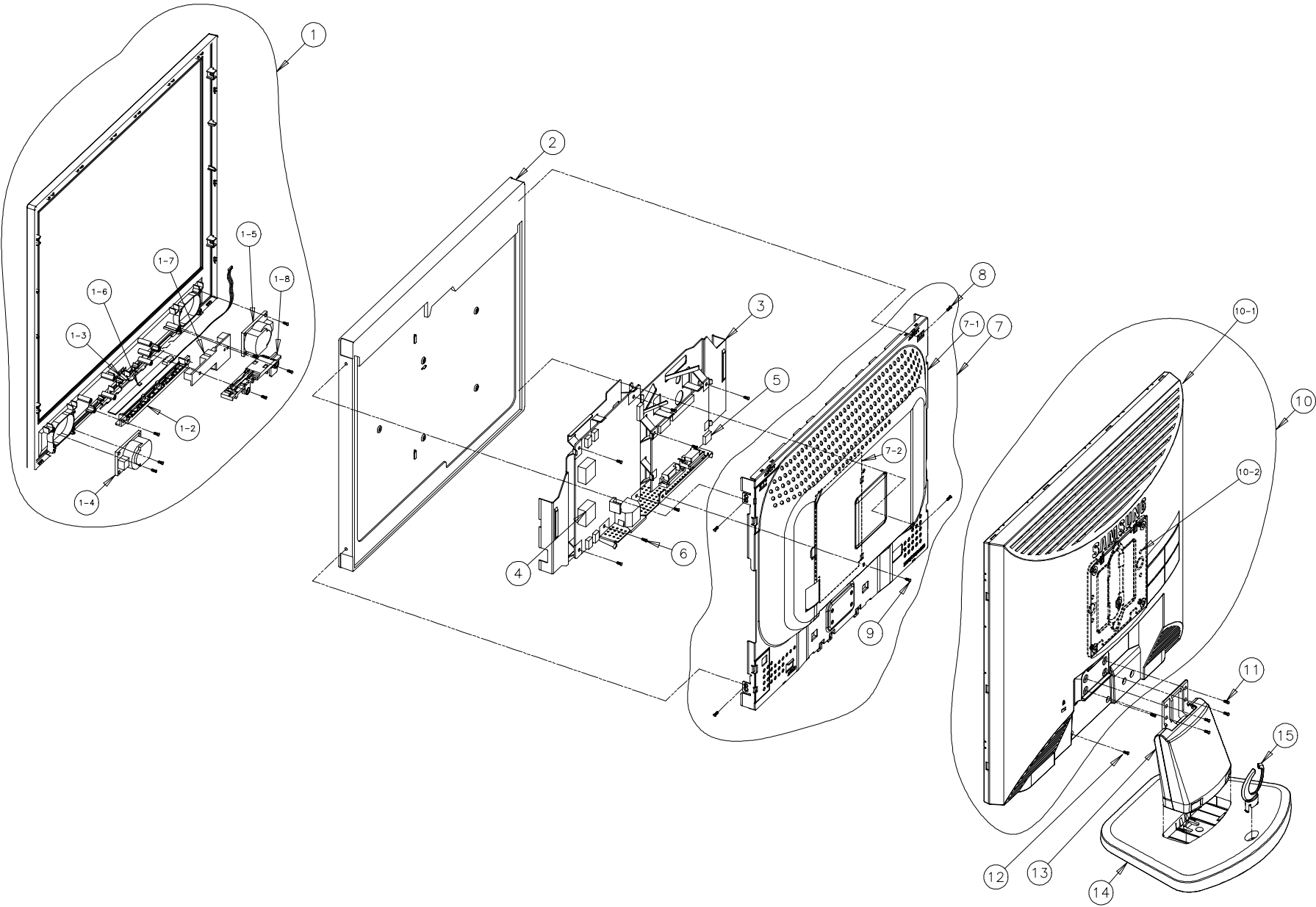
No.	DESCRIPTION	CODE No.	SPECIFICATION	Q'ty	REMARK
1	ASSY, COVER-FRONT	BN96-01072A	ABS HB, GR70, SILVER	1	SA
1-1	COVER-FRONT	BN63-00595H	ABS HB GR70 SILVER	1	SNA
1-2	LENS-LED	BN67-00076A	ACRYL, CLEAR	1	SNA
1-3	KNOB-FUNCTION	BN64-00139B	ABS+PC, GR70 SILVER	1	SNA
1-4	ASS'Y FUNCTION-PCB	BN96-01112A	-	1	SNA
1-5	SCREW TAP TITE	6003-000276	BH, +, B, M3, L10, ZPC(YEL), SWCH10	2	SA
2	PANEL	BN07-00128B	LTPANEL-102, 0.9mm, 16.1W, 40W, 24.33Wx20.16.3W, 63.8.20Wx0.20W, 0.750.9.0.7W	1	SA
3	BRKT-PCB	BN61-01103A	SECC T1.0, ANALOG TYPE	1	SNA
4	IP-BOARD	BN44-00106A	-	1	SA
5	MAIN-BOARD	BN94-00516T	-	1	SA
6	SCREW TAP TITE	6003-000117	BH, +, B, M3, L6, ZPC(YEL), SWRC	7	SA
7	ASSY, SHIELD-COVER	BN96-01060B	SECC T1.0	1	SNA
7-1	SHIELD-COVER	BN63-01217A	SECC T1.0	1	SNA
7-2	COVER-INSULATOR	BN63-01313A	PC SHEET V2, T0.35, 106*144	1	SNA
8	SCREW-MACHINE	6001-000364	FH, +, M3, L8, ZPC(YEL)	4	SA
9	SCREW-TAP TITE	6003-000117	BH, +, B, M3, L6, ZPC(YEL), SWRC	1	SA
10	ASSY, COVER-REAR	BN96-01073A	ABS HB, BK07	1	SA
10-1	COVER-REAR	BN63-01264A	ABS HB, BK07	1	SNA
10-2	BRKT-VESA	BN61-00377A	GY17LS, SECC, T1.0, 100*100	1	SNA
11	SCREW-TAP TITE	6003-000337	BH, +, S, M4, L10, ZPC(BLK), SWRCH18	4	SA
12	SCREW-TAP TITE	6003-001086	BH, +, B, M3, L12, ZPC(BLK), SWRCH18	2	SA
13	ASSY, STAND	BN96-01064A	ABS HB, BK07	1	SA
14	STAND-BASE	BN61-01060A	ABS HB, BK07	1	SNA
15	STAND-HOLDER	BN61-00821A	ABS HB, BK07	1	SNA

6-4 GS19VT



No.	DESCRIPTION	CODE No.	SPECIFICATION	Q'ty	REMARK
1	ASSY, COVER-FRONT	BN96-01072B	ABS HB, GR70, SILVER	1	SA
1-1	COVER-FRONT	BN63-00595H	ABS HB GR70 SILVER	1	SNA
1-2	LENS-LED	BN67-00076A	ACRYL, CLEAR	1	SNA
1-3	KNOB-FUNCTION	BN64-00139B	ABS+PC, GR70 SILVER	1	SNA
1-4	ASS'Y FUNCTION-PCB	BN96-01112A	-	1	SNA
1-5	SCREW TAPTITE	6003-000276	BH, +, B, M3, L10, ZPC(YEL), SWCH10	2	SA
2	PANEL	BN07-00128B	LTM190E1-L02	1	SA
3	BRKT-PCB	BN61-01103A	SECC T1.0, ANALOG TYPE	1	SNA
4	IP-BOARD	BN44-00106A	-	1	SA
5	MAIN-BOARD	BN94-00516T	-	1	SA
6	SCREW TAPTITE	6003-000117	BH, +, B, M3, L6, ZPC(YEL), SMRC	7	SA
7	ASSY, SHIELD-COVER	BN96-01060B	-	1	SNA
7-1	SHIELD-COVER	BN63-01217A	SECC T1.0	1	SNA
7-2	COVER-INSULATOR	BN63-01313A	PC SHEET V2, T0.35, 106*144	1	SNA
8	SCREW-TAPTITE	6003-000276	BH, +, B, M3, L8, ZPC(YEL)	-	SA
9	SCREW-MACHINE	6001-000364	FH, +, M3, L8, ZPC(YEL)	4	SA
10	SCREW-TAPTITE	6003-000117	BH, +, B, M3, L6, ZPC(YEL), SMRC	1	SA
11	ASSY, COVER-REAR	BN96-01073C	ABS HB, BK07	1	SA
11-1	COVER-REAR	BN63-01264A	ABS HB, BK07	1	SNA
11-2	BRKT-VESA	BN61-00377A	GY17LS, SECC, T1.0, 100*100	1	SNA
12	SCREW-TAPTITE	6003-000337	BH, +, S, M4, L10, ZPC(BLK), SMRCH18	4	SA
13	SCREW-TAPTITE	6003-001086	BH, +, B, M3, L12, ZPC(BLK), SMRCH18	2	SA
14	ASSY, STAND	BN96-00300B	GY19VS ABS HB, BK07	1	SNA
15	COVER-STAND	BN63-00590B	GY19VS ABS HB, BK07	1	SNA

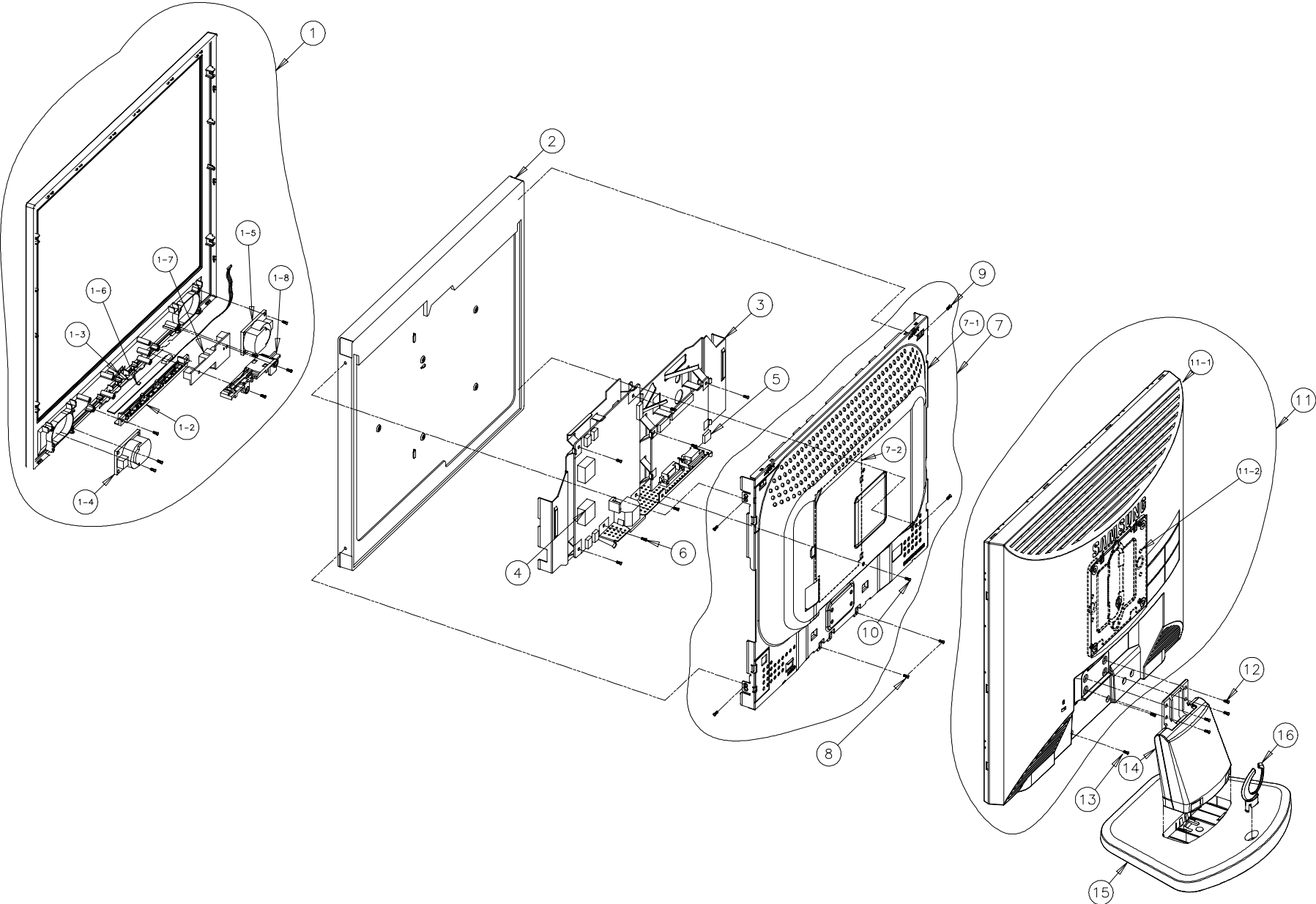
6-5 GS15MS



No.	DESCRIPTION	CODE No.	SPECIFICATION	Q'ty	REMARK
1	ASSY, COVER-FRONT	BN96-01078A	ABS HB, GR70, SILVER	1	SA
1-1	COVER-FRONT	BN63-01196A	ABS HB GR70 SILVER	1	SNA
1-2	KNOB-FUNCTION	BN64-00154B	ABS+PC, BK07	1	SNA
1-3	LENS-LED	BN67-00074A	ACRYL, CLEAR	1	SNA
1-4	SPEAKER-R	BN96-00518A	-	1	SA
1-5	SPEAKER-L	BN96-00515A	-	1	SA
1-6	ASSY BOARD P FUNCTION	BN96-01156A	-	1	SNA
1-7	ASSY BOARD	-	-	1	SNA
1-8	GUIDE-AUDIO	BN61-01218A	ABS HB	1	SNA
1-9	SCREW TAPTITE	6003-000259	BH, +, B, M3, L8	8	SA
2	PANEL	BN07-00164B	1.06MM(0.041)THICK & 0.12X0.3X0.12, 0.1X. 0.1X0.12X0.12, 0.1X0.12X0.12, 0.1X0.12X0.12	1	SA
3	BRKT-PCB	BN61-01068A	SECC T1.0, ANALOG TYPE	1	SNA
4	IP-BOARD	BN44-00107B	-	1	SA
5	MAIN-BOARD	BN94-00527E	-	1	SA
6	SCREW TAPTITE	6003-000117	BH, +, B, M3, L6, ZPC(YEL), SWRC	7	SA
7	ASSY, SHIELD-COVER	BN96-01058A	SECC T1.0	1	SNA
7-1	SHIELD-COVER	BN63-01192A	SECC T1.0	1	SNA
7-2	COVER-INSULATOR	BN63-01313A	PC SHEET V2, T0.35, 106*144	1	SNA
8	SCREW-MACHINE	6001-000125	BH, +, M3, L4, ZPC(YEL), SM20C,	4	SA
9	SCREW-TAPTITE	6003-000117	BH, +, B, M3, L6, ZPC(YEL), SWRC	1	SA
10	ASSY, COVER-REAR	BN96-01080A	ABS HB, BK07	1	SA
10-1	COVER-REAR	BN63-01197A	ABS HB, BK07	1	SNA
10-2	BRKT-VESA	BN61-00397A	SECC, T1.0	1	SNA
11	SCREW-TAPTITE	6003-000337	BH, +, S, M4, L10, ZPC(BLK), SWRCH18	4	SA
12	SCREW-TAPTITE	6003-001086	BH, +, B, M3, L12, ZPC(BLK), SWRCH18	2	SA
13	ASSY, STAND	BN96-01063A	ABS HB, BK07	1	SA
14	STAND-BASE	BN61-00824A	ABS HB, BK07	1	SNA
15	STAND-HOLDER	BN61-00821A	ABS HB, BK07	1	SNA

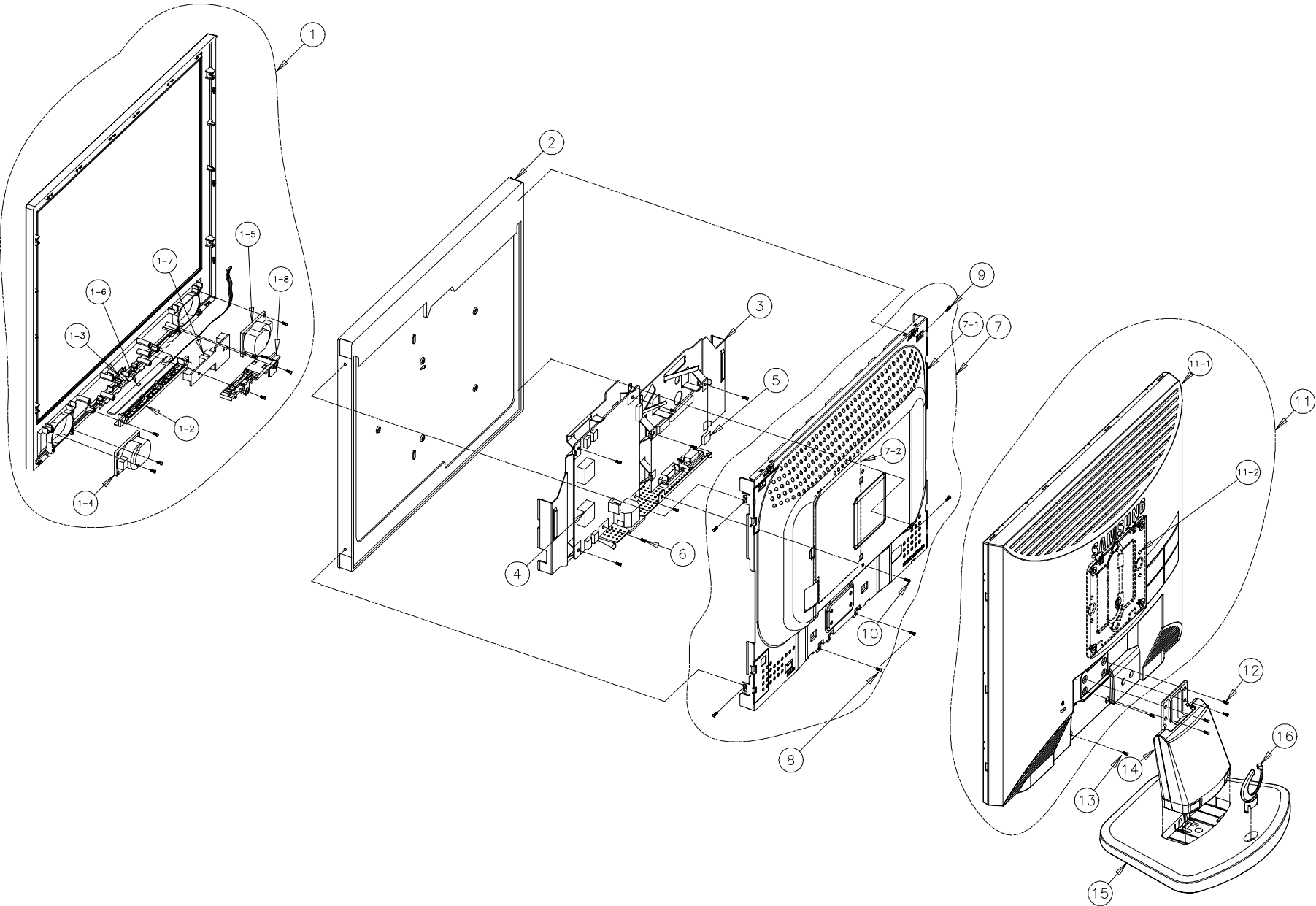


6-6 GS17MS



No.	DESCRIPTION	CODE No.	SPECIFICATION	Q'ty	REMARK
1	ASSY, COVER-FRONT	BN96-01083A	ABS HB, GR70, SILVER	1	SA
1-1	COVER-FRONT	BN63-00653H	ABS HB GR70 SILVER	1	SNA
1-2	KNOB-FUNCTION	BN67-00154B	ABS+PC, BK07	1	SNA
1-3	LENS-LED	BN67-00074A	ACRYL, CLEAR	1	SNA
1-4	SPEAKER-R	BN96-00518A	-	1	SA
1-5	SPEAKER-L	6003-00515A	-	1	SA
1-6	ASSY BOARD P. FUNCTION	BN96-01156A	-	1	SNA
1-7	ASSY BOARD	-	-	1	SNA
1-8	GUIDE-AUDIO	BN61-01218A	ABS HB	1	SNA
1-9	SCREW TAPTITE	6003-000259	BH, +, B, M3, L8	8	SA
2	PANEL	BN07-00085A	LTN170EU-L01	1	SA
3	BRKT-PCB	BN61-01102A	SECC T1.0, ANALOG TYPE	1	SNA
4	IP-BOARD	BN44-00106A	-	1	SA
5	MAIN-BOARD	BN94-00527A	-	1	SA
6	SCREW TAPTITE	6003-000117	BH, +, B, M3, L6, ZPC(YEL), SWRC	7	SA
7	ASSY, SHIELD-COVER	BN96-01059B	SECC T1.0	1	SNA
7-1	SHIELD-COVER	BN63-01211A	SECC T1.0	1	SNA
7-2	COVER-INSULATOR	BN63-01313A	PC SHEET V2, T0.35, 106*144	1	SNA
8	SCREW-TAPTITE	6003-000276	BH, +, B, M3, L10, ZPC(YEL), SWRC	2	SA
9	SCREW-MACHINE	6001-000559	FH, +, M3, L6, ZPC(YEL)	4	SA
10	SCREW-TAPTITE	6003-000117	BH, +, B, M3, L6, ZPC(YEL), SWRC	1	SA
11	ASSY, COVER-REAR	BN96-01079A	ABS HB, BK07	1	SA
11-1	COVER-REAR	BN63-01199A	ABS HB, BK07	1	SNA
11-2	BRKT-VESA	BN61-00377A	GY17LS, SECC, T1.0, 100*100	1	SNA
12	SCREW-TAPTITE	6003-000337	BH, +, S, M4, L10, ZPC(BLK), SWRGH18	4	SA
13	SCREW-TAPTITE	6003-001086	BH, +, B, M3, L12, ZPC(BLK), SWRGH18	2	SA
14	ASSY, STAND	BN96-01063A	ABS HB, BK07	1	SA
15	STAND-BASE	BN61-00824A	ABS HB, BK07	1	SNA
16	STAND-HOLDER	BN61-00821A	ABS HB, BK07	1	SNA

6-7 GS19MS



No.	DESCRIPTION	CODE No.	SPECIFICATION	Q'ty	REMARK
1	ASSY, COVER-FRONT	BN96-01084A	ABS HB, GR70, SILVER	1	SA
1-1	COVER-FRONT	BN63-01200A	ABS HB GR70 SILVER	1	SNA
1-2	KNOB-FUNCTION	BN67-00154B	ABS+PC, BK07	1	SNA
1-3	LENS-LED	BN67-00076A	ACRYL, CLEAR	1	SNA
1-4	SPEAKER-R	BN96-00518A	-	1	SA
1-5	SPEAKER-L	6003-00515A	-	1	SA
1-6	ASSY BOARD P FUNCTION	BN96-01156A	-	1	SNA
1-7	ASSY BOARD	-	-	1	SNA
1-8	GUIDE-AUDIO	BN61-01218A	ABS HB	1	SNA
1-9	SCREW TAPTITE	6003-000259	BH, +, B, M3, L8	8	SA
2	PANEL	BN07-00128B	LTM190E1-L02	1	SA
3	BRKT-PCB	BN61-01103B	SECC T1.0, ANALOG TYPE	1	SNA
4	IP-BOARD	BN44-00106A	-	1	SA
5	MAIN-BOARD	BN94-00527A	-	1	SA
6	SCREW TAPTITE	6003-000117	BH, +, B, M3, L6, ZPC(YEL), SMRC	7	SA
7	ASSY, SHIELD-COVER	BN96-01060B	-	1	SNA
7-1	SHIELD-COVER	BN63-01217A	SECC T1.0	1	SNA
7-2	COVER-INSULATOR	BN63-01313A	PC SHEET V2, T0.35, 106*144	1	SNA
8	SCREW-TAPTITE	6003-000276	BH, +, B, M3, L10, ZPC(YEL)	2	SA
9	SCREW-MACHINE	6001-000364	FH, +, M3, L8, ZPC(YEL), SM20C	4	SA
10	SCREW-TAPTITE	6003-000117	BH, +, B, M3, L6, ZPC(YEL), SMRC	1	SA
11	ASSY, COVER-REAR	BN96-01081A	ABS HB, BK07	1	SA
11-1	COVER-REAR	BN63-01201A	ABS HB, BK07	1	SNA
11-2	BRKT-VESA	BN61-00397A	SECC, T1.0	1	SNA
12	SCREW-TAPTITE	6003-000337	BH, +, S, M4, L10, ZPC(BLK), SMRCH18	4	SA
13	SCREW-TAPTITE	6003-001086	BH, +, B, M3, L12, ZPC(BLK), SMRCH18	2	SA
14	ASSY, STAND	BN96-01064A	ABS HB, BK07	1	SA
15	STAND-BASE	BN96-01109A	ABS HB, BK07	1	SNA
16	STAND-HOLDER	BN61-00821A	ABS HB, BK07	1	SNA

Memo